



SC824ZB Smart Relay – Low Voltage

User Manual



SC824ZB Smart Relay – Low Voltage User Manual

Contents

Section	Page
1 Introduction	
Device Overview.....	1-1
In The Box.....	1-1
Tools Required /Optional	1-1
2 Installation	
Installation using Wall Mount with Cover.....	2-1
Installation with Surface Mounting Adhesive.....	2-2
3 Joining/Pairing Instructions	
Joining the network for SALUS Smart Home Control Only.....	3-1
Pairing with AWRT10RF Wireless Radiant Thermostat.....	3-3
4 Operation & Setup	
Local Relay Operation	4-1
Schedule Setup with SALUS Smart Home Application.....	4-1
Setup Options	4-2
5 Factory Defaults	
Resetting Factory Defaults Settings	5-1

Safety Instructions

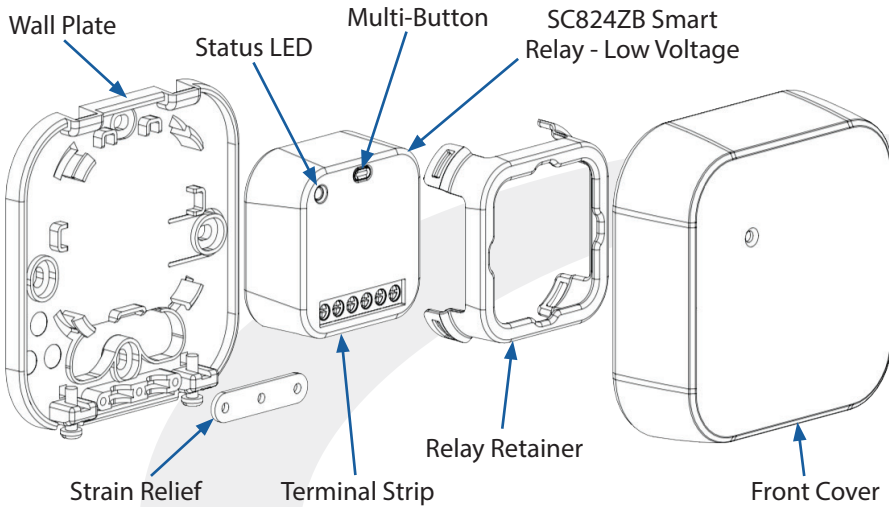
Please read these instructions carefully BEFORE INSTALLING and using the SC824ZB Smart Relay. Keep this guide in a safe place for future reference.

- Installation and repairs are to be performed by a qualified contractor in strict accordance with the requirements of state and local regulating agencies. In the absence of local requirements, follow ANSI/NFPA 70, National Electric Code.
- The SC824ZB Smart Relay uses a 24 VAC power source. **DO NOT CONNECT** this device to supply voltages above 30 VAC.
- **DO NOT** expose the Smart Relay to voltage fluctuations of more than 10% (± 2.4 VAC)
- **DO NOT** install the SC824ZB in a bathroom or area of excessive moisture.
- **DO NOT** allow the Smart Relay to get wet.
- **DO NOT** expose the SC824ZB Smart Relay to temperatures below -20°F (-4°C) or above 122°F (60°C).
- **DO NOT** allow the Smart Relay to operate in temperatures below 32°F (0°C) or above 113°F (45°C).
- **DO NOT** use solvents or aggressive cleaning agents to clean the device. A dry, soft cloth is recommended.

Section 1

SC824ZB Smart Relay – Low Voltage User Manual Introduction

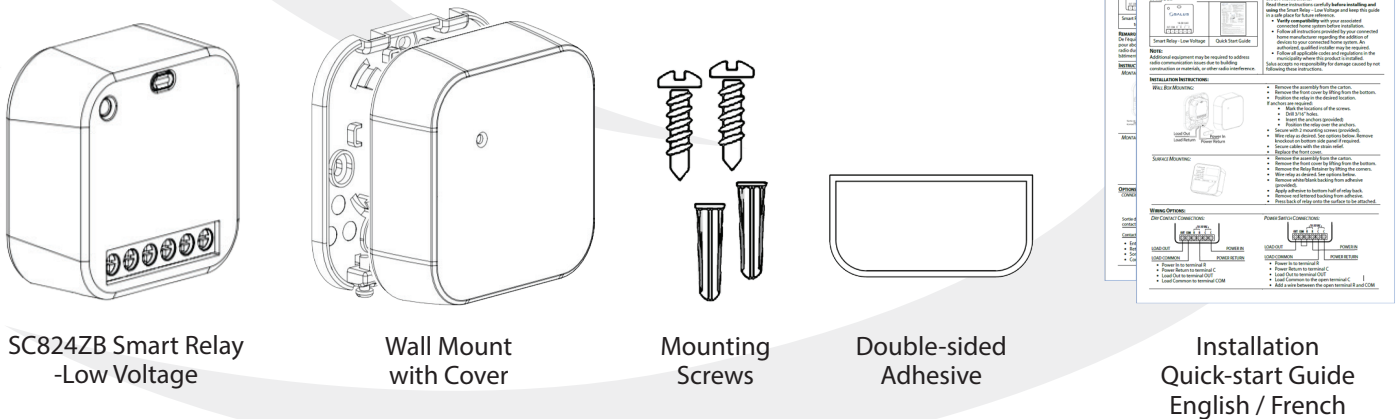
Device Overview



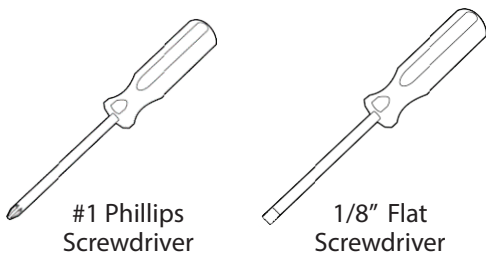
Item	Description
Wall Plate	Allows surface mounting of the SC824ZB Smart Relay
Relay Retainer	Attaches the SC824ZB to the Wall Plate
Multi-Button	For pairing and identification of the SC824ZB Smart Relay
Strain Relief	Prevents damage to the wiring terminals from external forces
Terminal Strip	For connecting relay contacts and power supply
Status LED	Provides status feedback about the SC824ZB Relay

In The Box

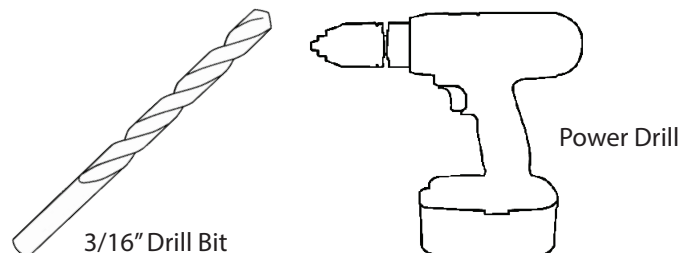
BEFORE BEGINNING installation, confirm that all parts are present in the package:



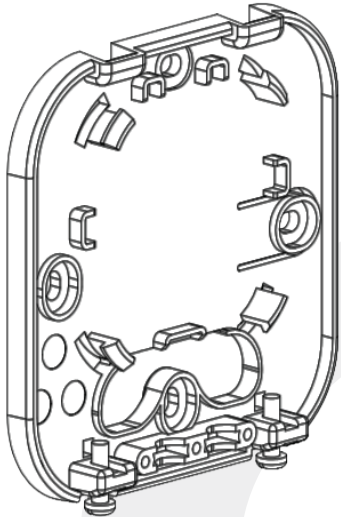
Tools Required



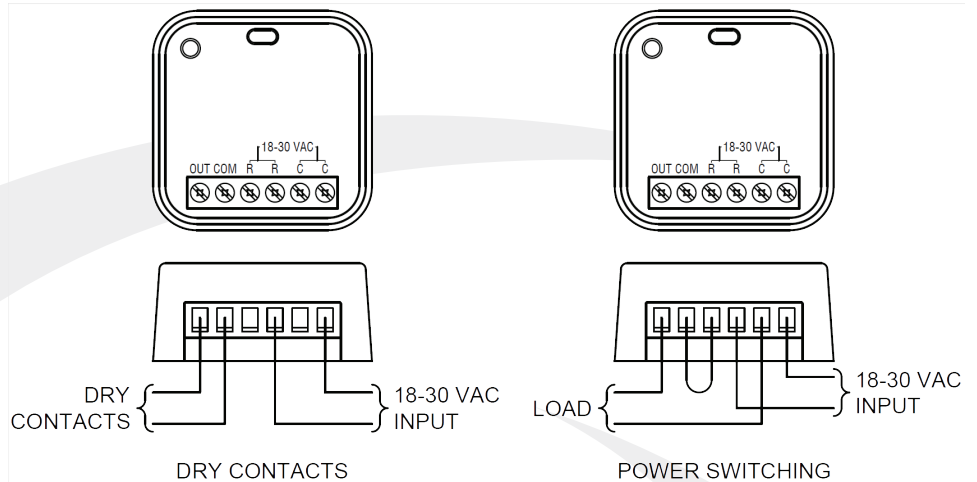
Optional Tools



Installation Using Wall Mount With Cover



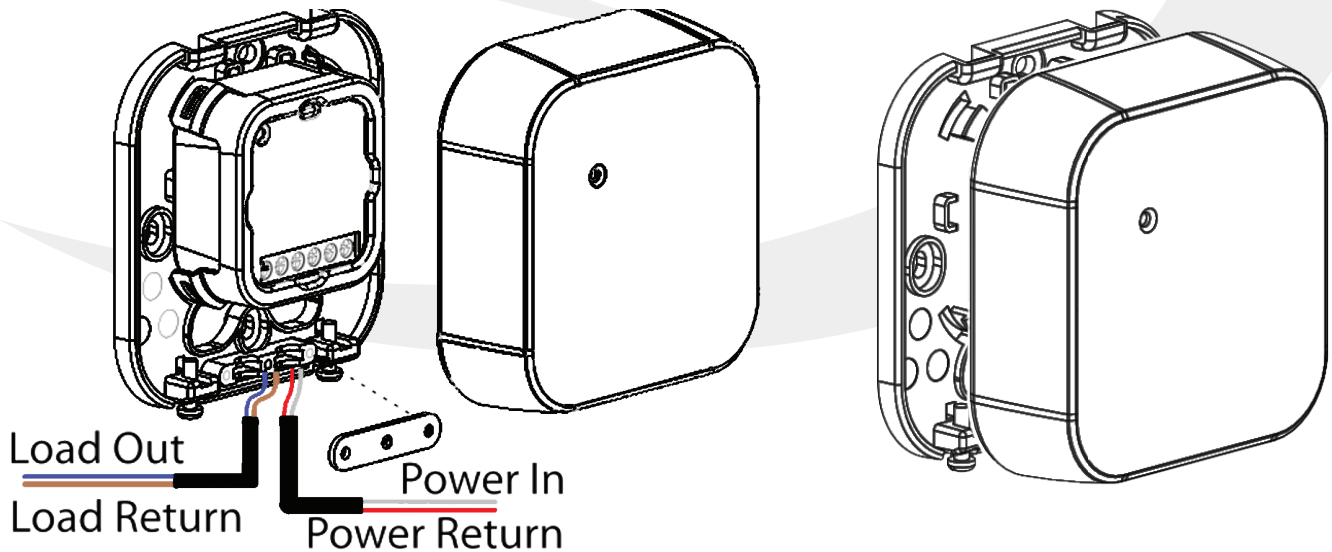
Step 1. Attach the wall plate (if used) for the Smart Relay in a suitable location using the screws included.



Step 2. Wire the SC824 Smart Relay using the appropriate diagram above. Run wires through the strain relief before proceeding to the next step. For a power switching application, a jumper must be applied between R & COM.



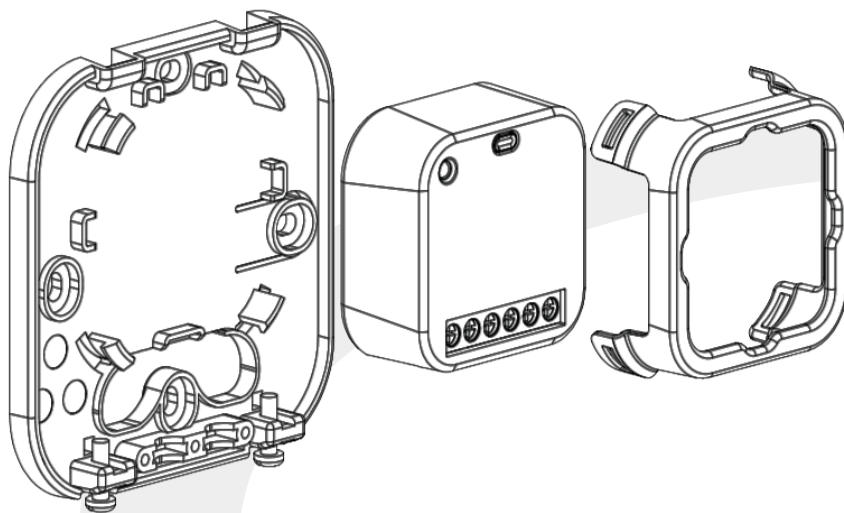
- Locate the Smart Relay in or near the location that it will be installed to account for radio interference
- Avoid locations where exposure to splashing water, accumulation of dirt/grease or where temperatures exceed 104°F (40°C)



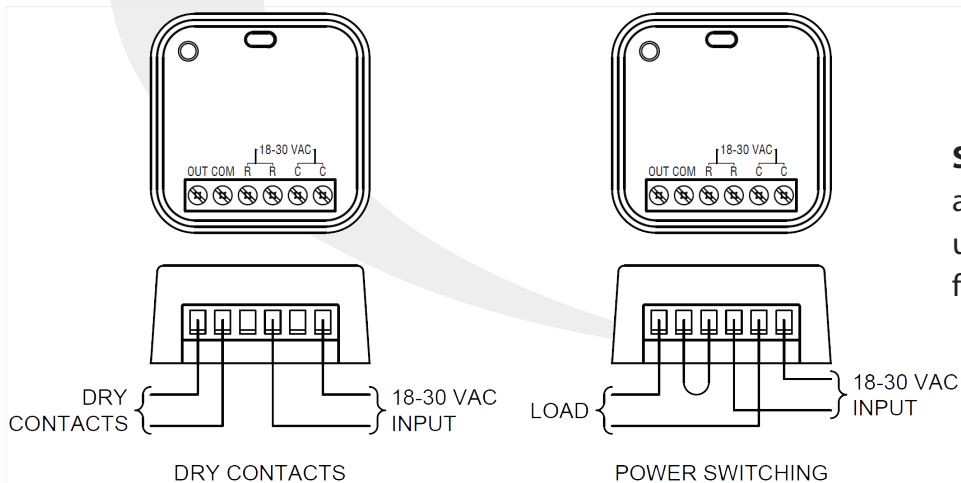
Step 3. Place SC824ZB Smart Relay in the space provided on the wall plate and use the retaining clip to hold it in place. Tighten the strain relief to hold wires securely.

Step 4. Remove the knockout portion of the cover to allow wires to pass through. Assemble the enclosure cover, making sure the wires don't interfere with proper closure.

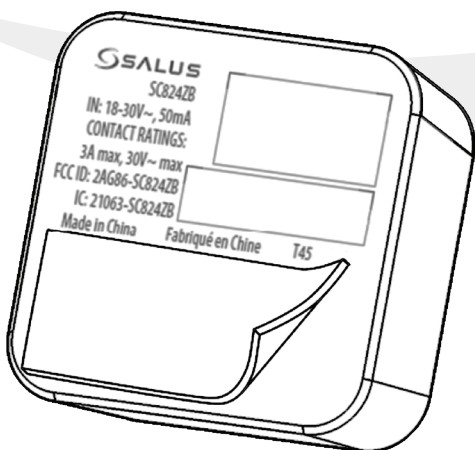
Installation With Surface Mounting Adhesive



Step 1. Remove Smart Relay from Mounting Kit.



Step 2. Wire the relay using the appropriate diagram. Be sure to use a jumper between R & COM for Power Switching.



Step 3. Remove the white backing with no text from the adhesive provided.

Step 4. Apply the adhesive to the back of the Smart Relay at the bottom below the text.

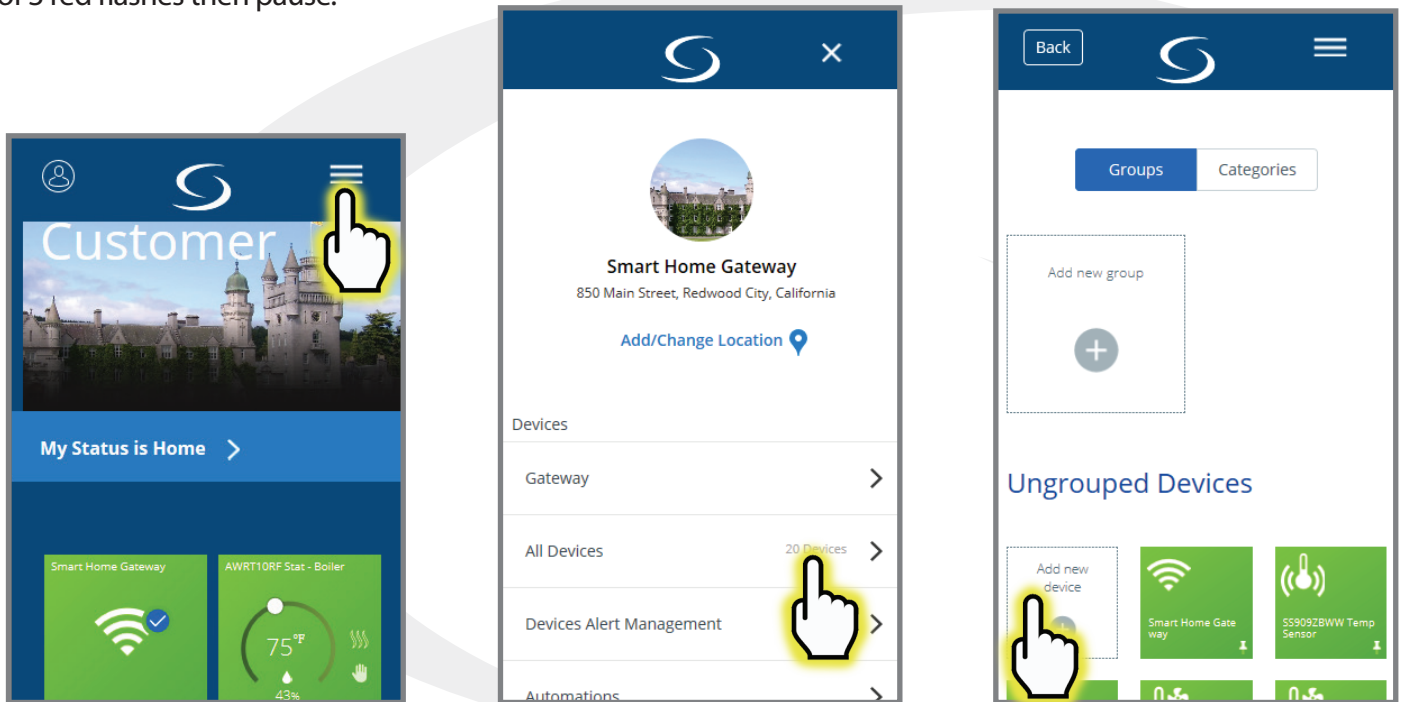
Step 5. Remove the lettered backing from the double-sided adhesive and apply the relay to the desired surface.

Joining the Network for SALUS Smart Home Control Only

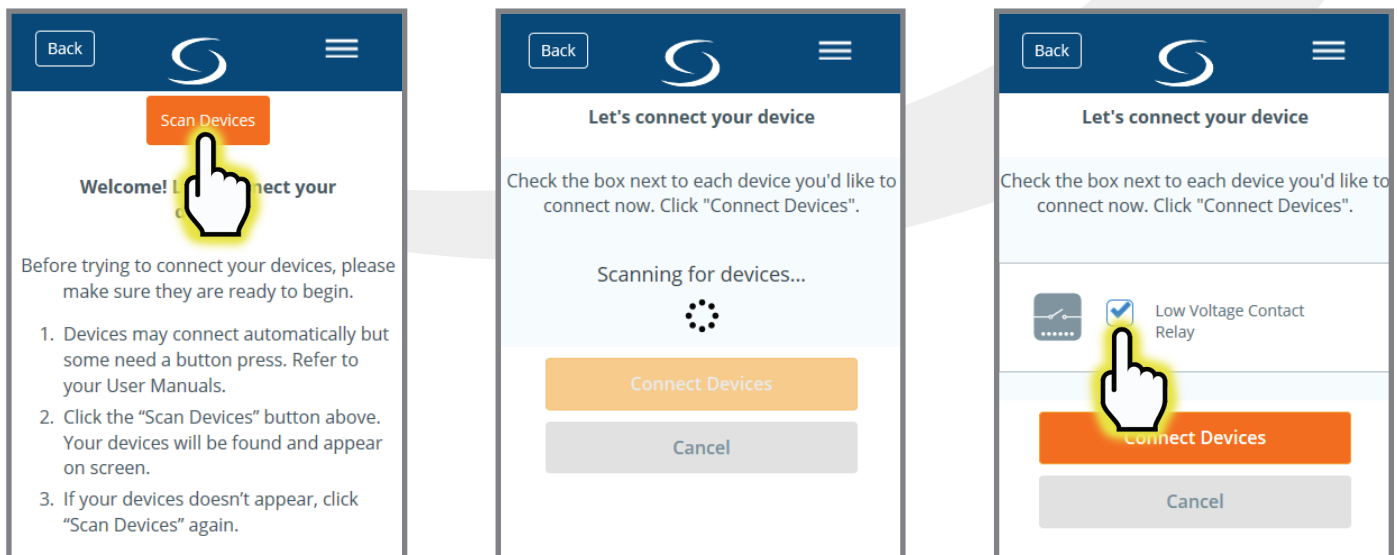


Be sure the Smart Relay is located at or near its intended location to account for potential radio interference.

Step 1. Be sure that there is power applied to the SC824ZB Smart Relay and the Status LED is repeating a sequence of 3 red flashes then pause.



Step 2. Open the SALUS Smart Home application, select the drop-down menu from the upper right of the screen and select: **All Devices → Add New Device**



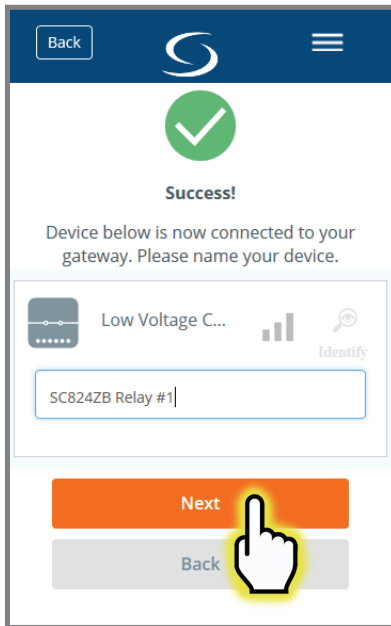
Step 3. Press "Scan Devices."

After pressing "Scan for Equipment", the SALUS Smart Home application scans for devices.

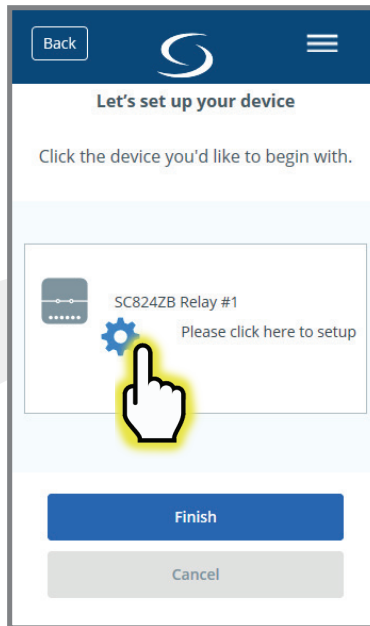
Step 4. Check the box for the Smart Relay and press "Connect Devices".

Section 3

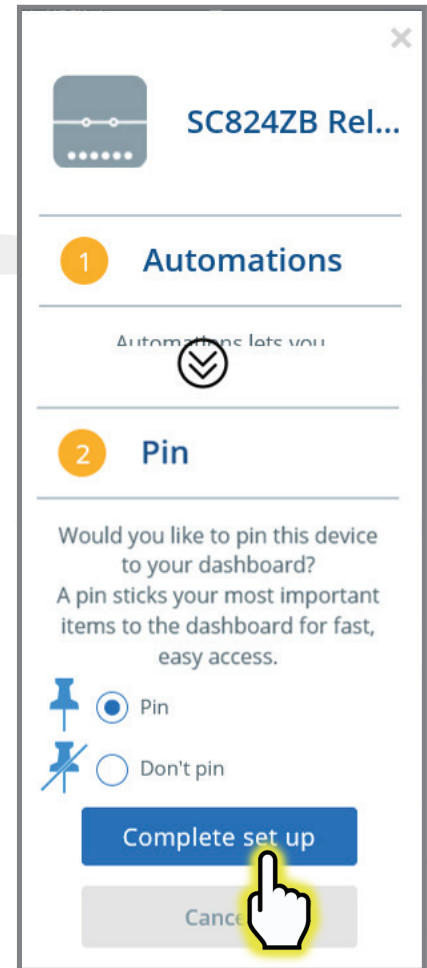
SC824ZB Smart Relay – Low Voltage User Manual Joining/Pairing Instructions



Step 5. Enter a unique descriptive name for each Smart Relay to easily identify each device. Press "Next".



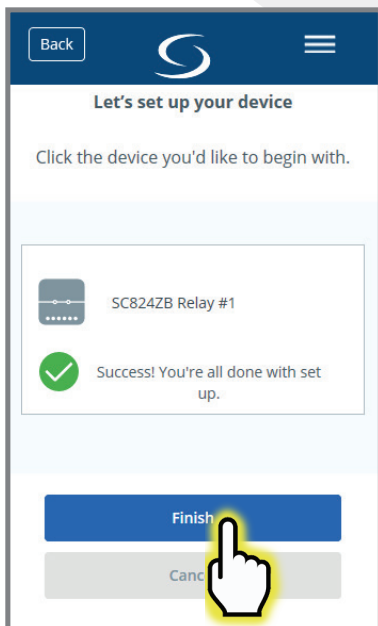
Step 6. Press "Please click here to setup".



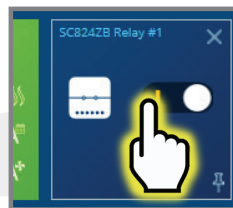
Step 7. Press "Complete set up" to continue



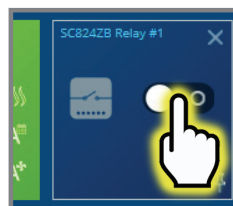
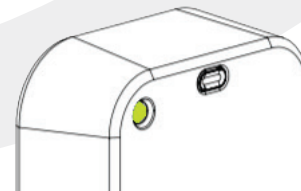
In case of a weak wireless signal, an AE10RF Wireless Repeater may be required.



Step 8. Press Finish to complete pairing.



Step 9. Using the SALUS Smart Home application, power the relay and make sure the Status LED is green.



Step 10. Switch off the relay and make sure the Status LED goes off.

Pairing with AWRT10RF Wireless Radiant Thermostat

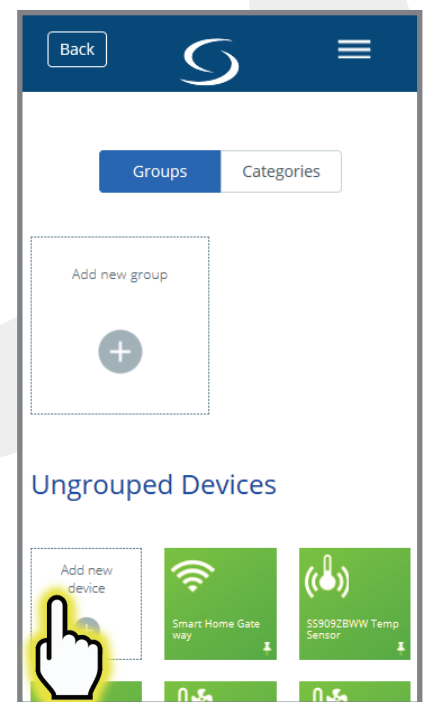
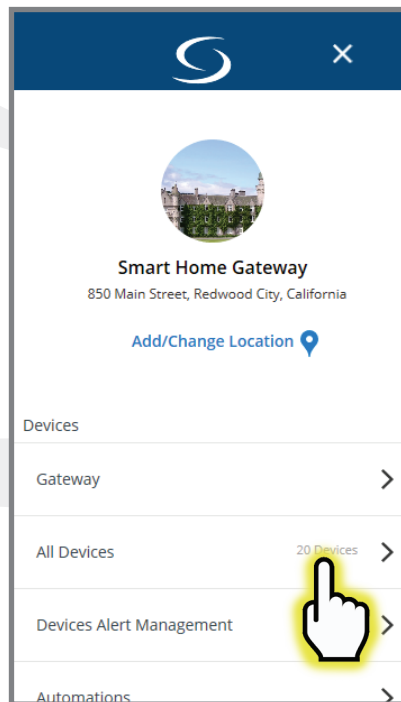
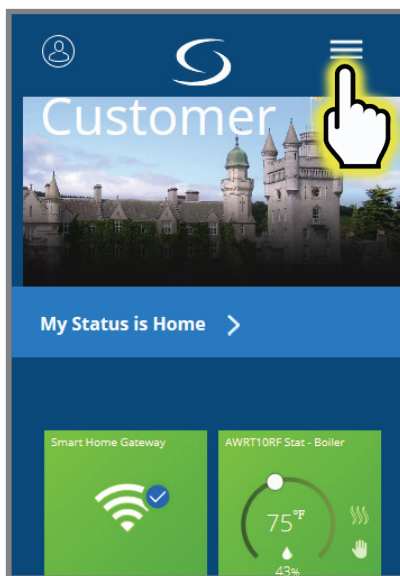
```
PAIR? RELAY_CTL
↓
PAIR? SSH_CTL
↓
PAIR? VALV_NO
↓
PAIR? VALV_NC
```

Step 1. Be sure there is power applied to the SC824ZB Smart Relay and the Status LED is repeating a sequence of 3 red flashes. If the Smart Relay is not flashing as described, reset the device using the procedure described in Section 5.

Step 2. Prepare the AWRT10RF Thermostat by inserting the batteries. Use the **✓** key to change from PAIR? RELAY_CTL to PAIR? VALV_NO or PAIR? VALV_NC. Using only the **✓** bypasses the PAIR? ROTR_VALV, PAIR? RCV1 and PAIR? RCV2 options. If the required options aren't displayed, refer to the AWRT10RF IOM for support.



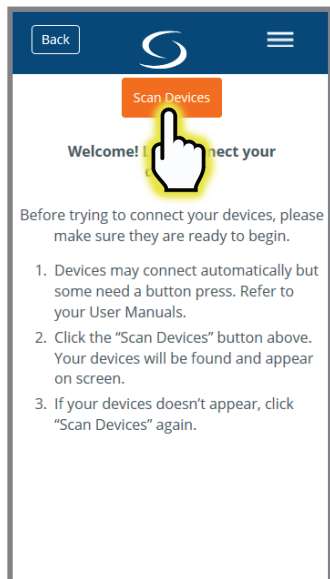
Only the VALV_NO and VALV_NC options can be used with the SC824ZB Smart Relay.



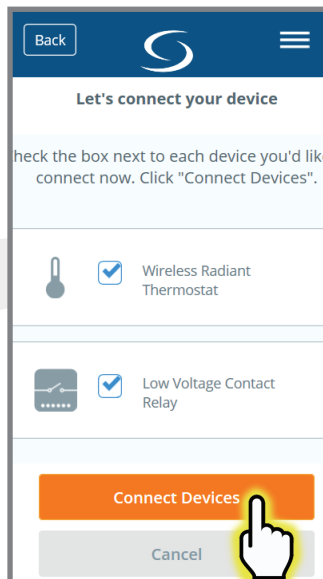
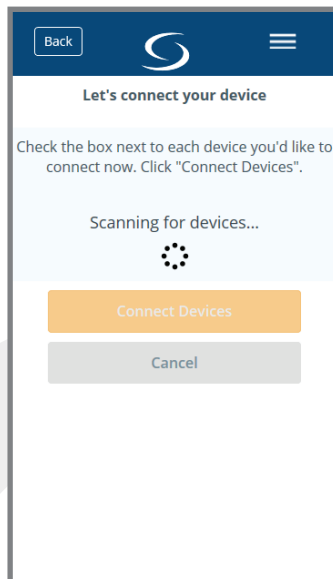
Step 3. Open the SALUS Smart Home application, select the drop-down menu from the upper right of the screen and select: **All Devices** → **Add New Device**

Section 3

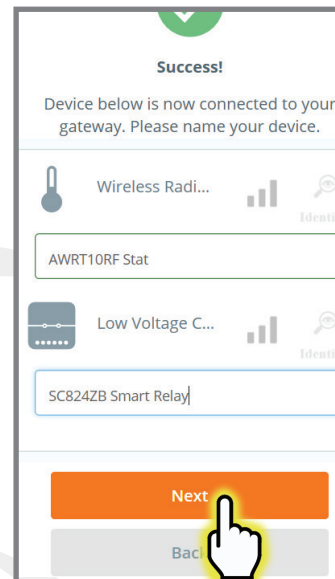
SC824ZB Smart Relay – Low Voltage User Manual Joining/Pairing Instructions



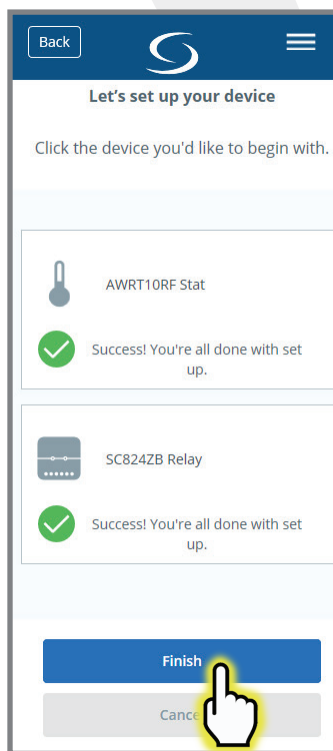
Step 4. Press **Scan Devices**. Scanning for devices is then displayed while the signals are located.



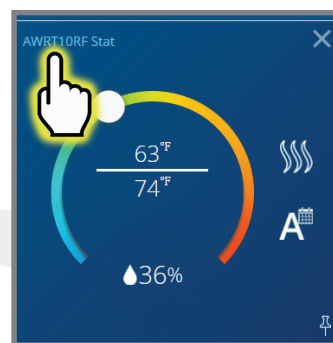
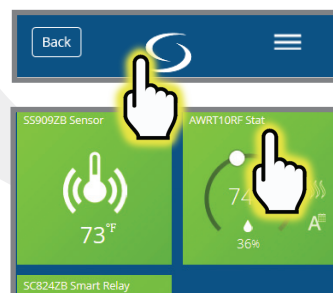
Step 5. Check boxes for the Smart Relay and the Wireless Radiant Thermostat. Press **Connect Devices**.



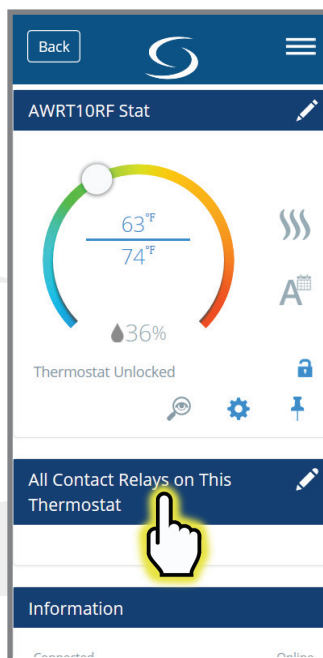
Step 6. Give each device a unique descriptive name. Press **Next**.



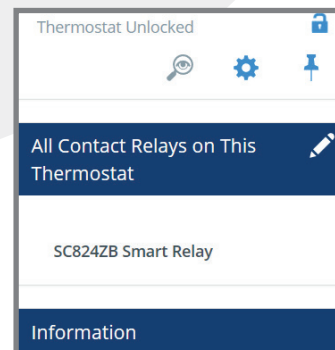
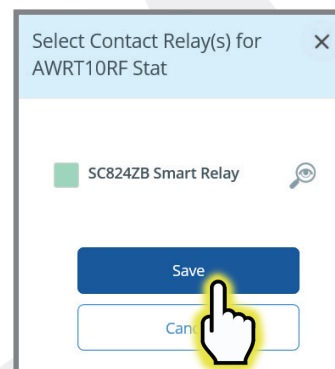
Step 7. After choosing set-up options, press **Complete set up** then **Finish**.



Step 8. Press the SALUS Logo to return to the Dashboard. Choose the AWRT10RF Tile then choose the title in the upper left corner.



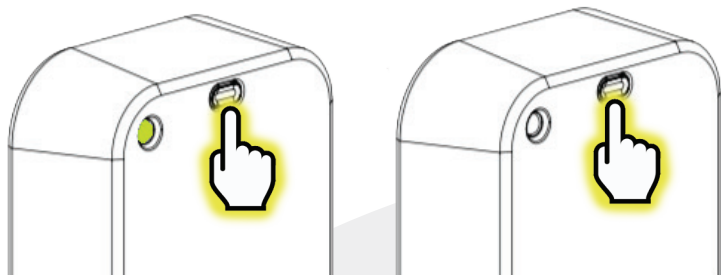
Step 9. Choose **All Contact Relays on This Thermostat**.



Step 10. Be sure that the box(es) next to the Smart Relay(s) that will be controlled by the AWRT Thermostat are green and press **Save**.

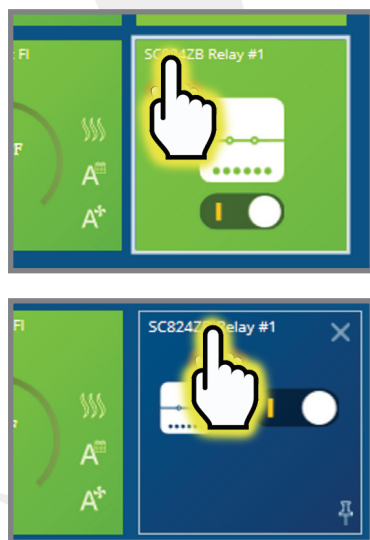
All associated relays will be listed on the AWRT10RF Set up menu and they will be activated when the Thermostat calls for heat.

Local Relay Operation

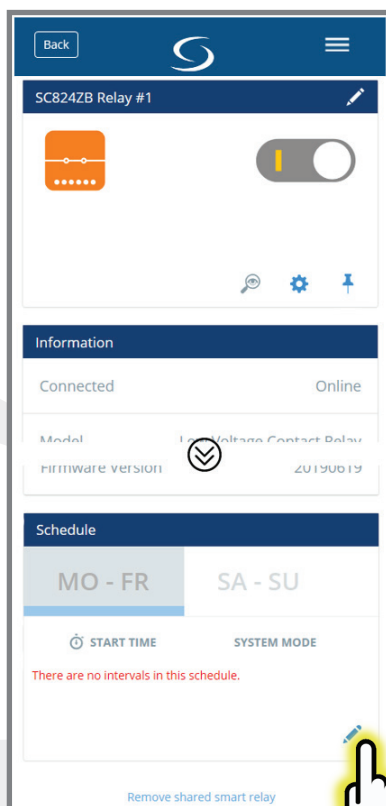



To operate the valve locally, without the SALUS Smart Home app, press and release the Multi-Button.

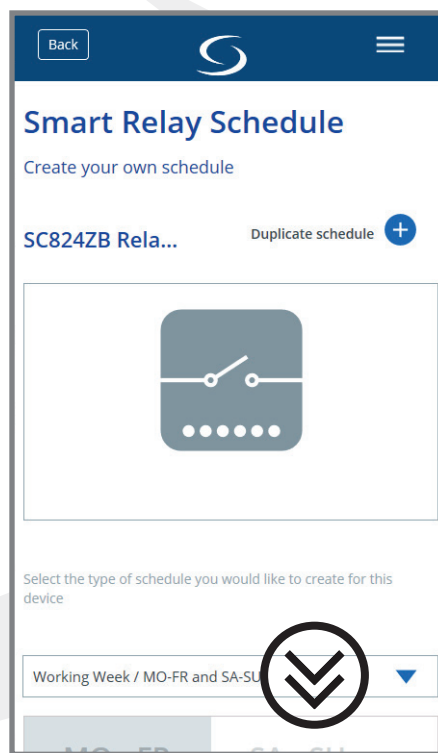
Schedule Setup - SALUS Smart Home Application



Step 1. Select the SC824ZB icon from the SALUS Smart Home dashboard. After the tile flips, choose the device name in the upper left.

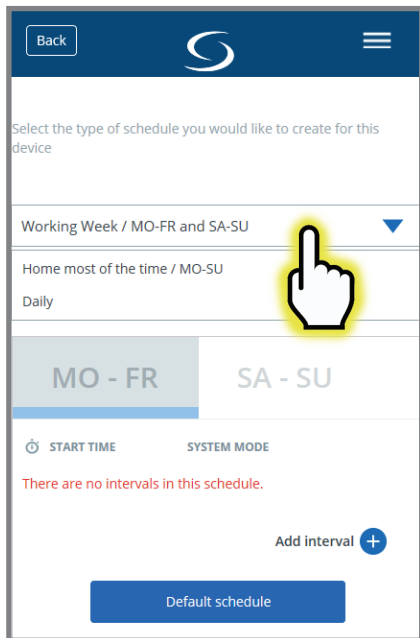


Step 2. Scroll to “Schedule” and choose the  icon.

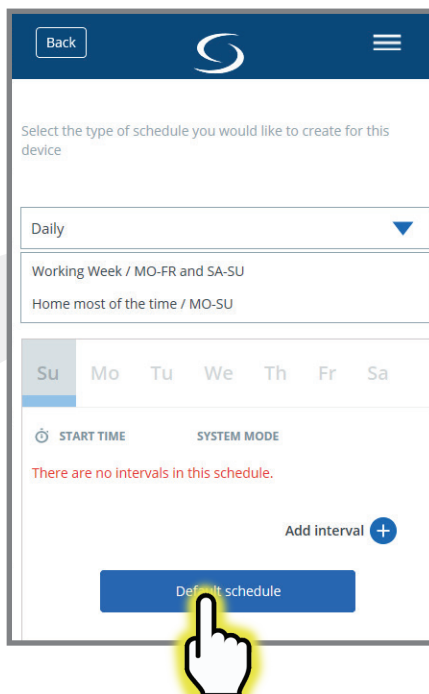


Step 3. Scroll down to view the schedule types.

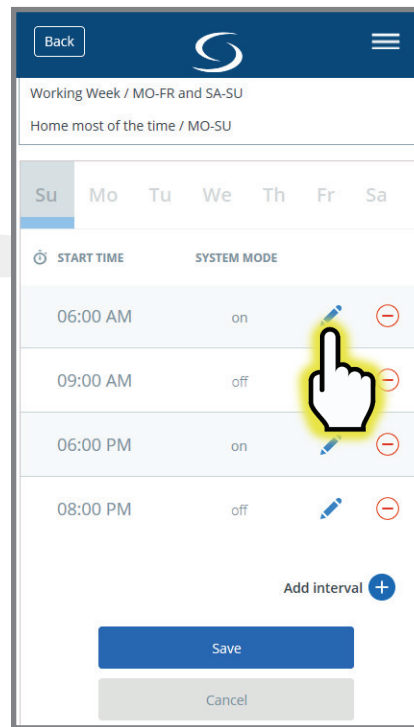
Setup Options




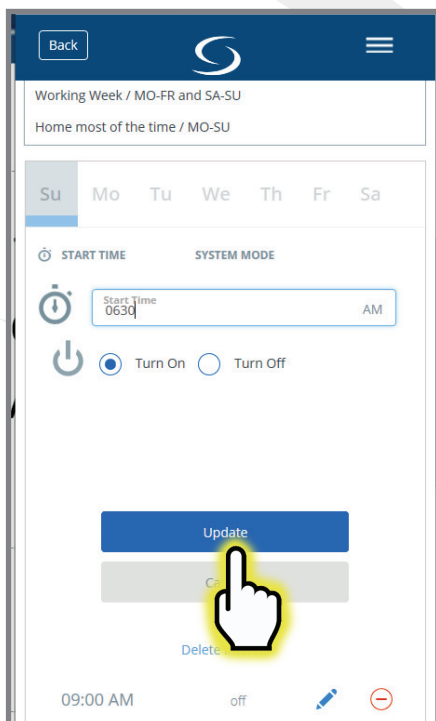
Step 4. Choose the drop-down menu and select the desired schedule type.



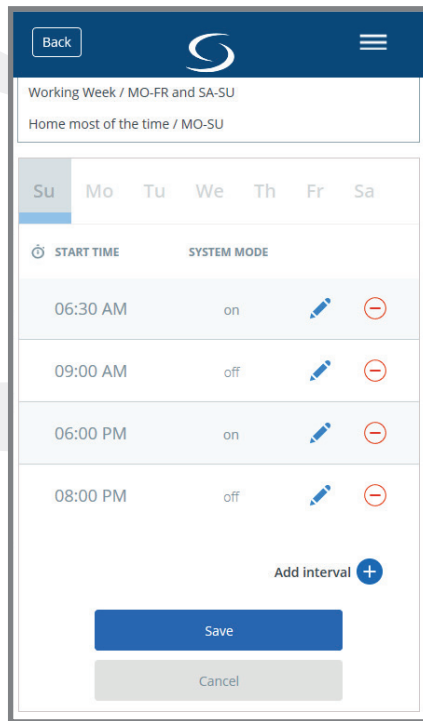
Step 5. Choose “Default schedule” to start with a basic schedule format.



Step 6. Click the  icon next to any interval to change values.

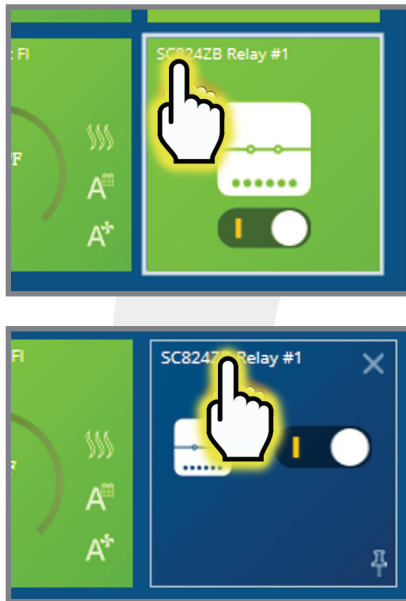


Step 7. Make the desired changes. Then click “Update”.

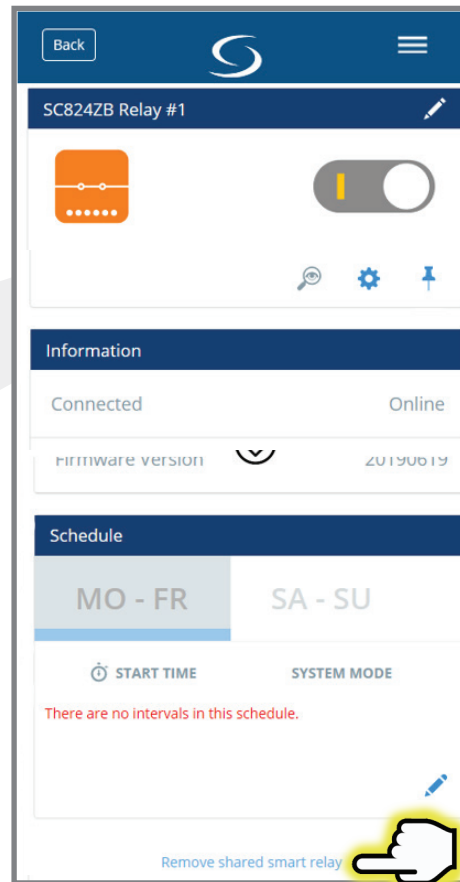


Make further changes as desired. The relay will switch on and off according to the schedule.

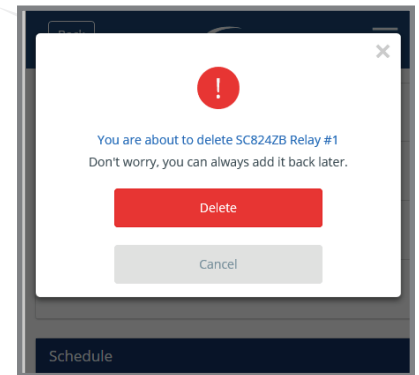
Resetting Factory Defaults



Step 1. Select the SC824ZB icon from the SALUS Smart Home dashboard. After the tile flips, choose the device name in the upper left.



Step 2. Scroll to the bottom of the next screen and select "Remove shared smart relay"



Step 3. Notification that the Sensor will be removed is displayed. Press "Delete" to continue. The SC824ZB Icon will be removed from the application.



Step 4. Press and hold Multi-Button until Status LED turns red. Continue holding the button until the LED begins blinking.

Step 5. Release the button and then briefly disconnect power.

Step 6. Observe the LED and be sure it repeats a sequence of 3 red flashes followed by a pause while it is searching for a network.

At this point, the valve has been reset to factory default settings and will respond to pairing requests.



SALUS North America, Inc.
850 Main Street
Redwood City, CA 94063
(888) 387-2587 | sales@salusinc.com | www.salusinc.com