

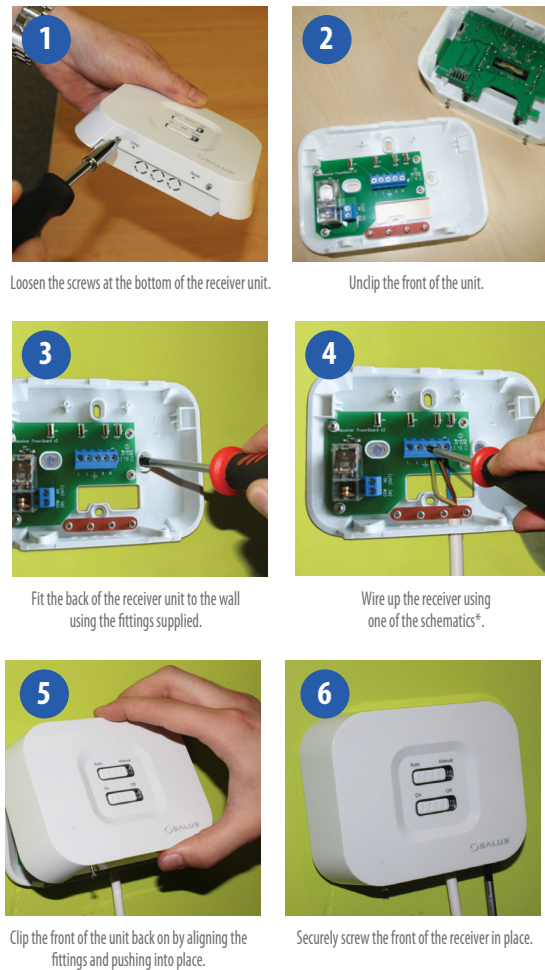
INSTALLATION

Electrical Connection

Terminal	Function
COM	Common Contact (volt free input)
NO	Normally Open Contact (volt free output)
	Earth Parking
H	Incoming Mains - Live
N	Incoming Mains - Neutral

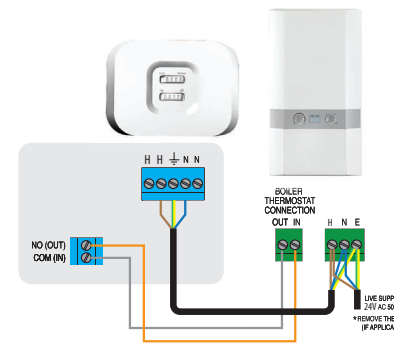
The AX10RF Receiver should be mounted in a suitable location that is both accessible for the connection of mains and control wiring, and allows good reception of the RF signal. The Receiver needs a 24 VAC mains supply to operate, and this should be fused appropriately (16A max.).

The Receiver should be mounted in a location where it will not come into contact with water, moisture or condensation. There are few electrical connections required to the AX10RF, and these connections should be made to the terminal block inside the Receiver. No Earth connection is required for the correct and safe operation of the AX10RF, but a parking terminal is provided to connect an Earth wire if one is present.

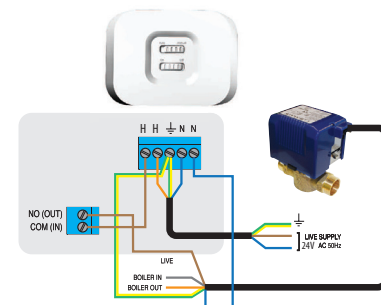


Schematics

*Configured as RX1



*Configured as RX2



Reset Button

If for any reason the system receiver stops operating, press reset and check system operation.



Replacing the System Receiver

If for any reason the system receiver needs to be removed/replaced, press the delete from network.

Power Up

- Ensure Coordinator is powered up and ready for pairing.
- Power up the receiver. The red light will flash.
- When the receiver has successfully joined the Zigbee network, the red LED will go steady.
- Please refer to AS20RF manual for system pairing.
- Once your system setup is complete, remember to take the coordinator out of pairing mode.

TECHNICAL DETAIL

Model	AX10RF
Type	Wired system receiver designed for 24VAC heating applications
Control	ON-OFF control
Environment Ratings	
Operating Temperature	0 °C to +50 °C
Storage Temperature	-20 °C to +60 °C
Operating Humidity	5-95 %RH
Switch Voltage	0-24VAC 16AMP
Power Source	24 VAC 60Hz
User Interface	Slide switch, LED, RED/GREEN
Operating Temperature	0 to 50 °C
Storage Temperature	-20°C to 60°C
Frequency	2.45 GHz
Approval	FCC and IC

WARRANTY

SALUS North America warrants that this product will be free from any defect in materials or workmanship, and shall perform in accordance with its specification, for a period of five years from the date of installation. SALUS North America sole liability for breach of this warranty will be (at its option) to repair or replace the defective product.

Customer Name:

Customer Address: Post Code:

Tel No: Email:

Engineers Company:

Tel No: Email:

Installation Date:

Engineers Name:

Engineers Signature:

SALUS North America

850 Main Street
Redwood City
CA 94063
T: +1-650-360-1725
E: sales@salusna.com

www.salusna.com



SALUS North America is a member of the Comptime Group

Maintaining a policy of continuous product development SALUS Controls plc reserve the right to change specification, design and materials of products listed in this brochure without prior notice.

For PDF Installation guide please go to www.salusna.com

SALUS
CONTROLS
Wireless Receiver Unit
Models: AX10RF



INSTALLER / USER MANUAL

BOX CONTENTS, COMPLIANCE & SAFETY INFORMATION



1 x Installer / User manual



2 x Screws
& 2 x Wall Plugs



Boiler Receiver x 1

INTRODUCTION

Thank you for purchasing the SALUS AX10RF system receiver. This unit is designed to work with Wyse.ly range of Zigbee network products.

The AX10RF can be configured as remote boiler switch or a simple single channel output to control, a thermal actuator or zone valve. Please note the two configurations above can be used together in the one system.

These instructions are applicable to the SALUS model stated on the front cover of this manual only.



Warning

This product must be fitted by a competent person, and installation must comply with the guidance, standards and regulations applicable to the city, country or state where the product is installed. Failure to comply with the requirements of the relevant guidance, standards and regulations could lead to injury, death or prosecution.



Sources of danger

The AX10RF must be disconnected from mains supply before removing the cover.



Emergency

Switch off the voltage to the individual thermostat wiring centre or complete system.



24 V AC



Warning

Always isolate the AC Mains supply before installing or working on any components that require 24 VAC 60Hz supply.

FCC Statement

This equipment has been tested and found to comply with the limits for a Class B digital device, pursuant to Part 15 of the FCC Rules. These limits are designed to provide reasonable protection against harmful interference in a residential installation. This equipment generates uses and can radiate radio frequency energy and, if not installed and used in accordance with the instructions, may cause harmful interference to radio communications. However, there is no guarantee that interference will not occur in a particular installation. If this equipment does cause harmful interference to radio or television reception, which can be determined by turning the equipment off and on, the user is encouraged to try to correct the interference by one or more of the following measures:

- Reorient or relocate the receiving antenna.
- Increase the separation between the equipment and receiver.
- Connect the equipment into an outlet on a circuit different from that to which the receiver is connected.
- Consult the dealer or an experienced radio/TV technician for help.

Changes or modifications not expressly approved by the party responsible for compliance could void the user's authority to operate the equipment.

This device complies with part 15 of the FCC Rules. Operation is subject to the following two conditions: (1) This device may not cause harmful interference, and (2) this device must accept any interference received, including interference that may cause undesired operation.

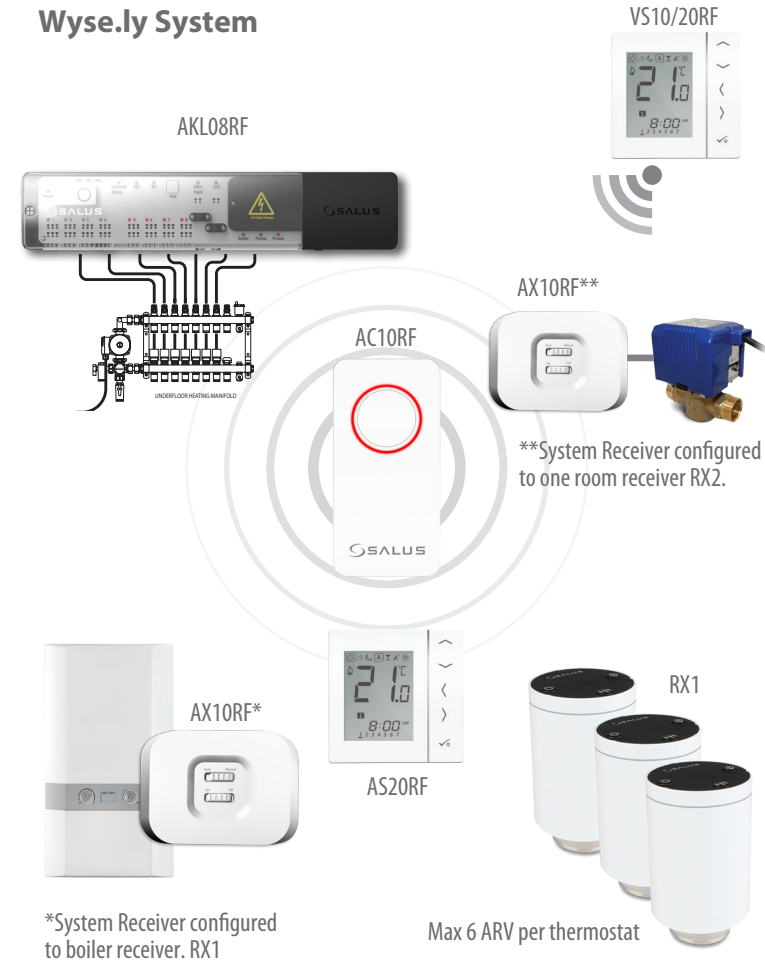
This device complies with Industry Canada's licence-exempt RSSs. Operation is subject to the following two conditions:

- (1) This device may not cause interference; and
- (2) This device must accept any interference, including interference that may cause undesired operation of the device.

Le présent appareil est conforme aux CNR d'Industrie Canada applicables aux appareils radio exempts de licence. L'exploitation est autorisée aux deux conditions suivantes : (1) l'appareil ne doit pas produire de brouillage, et (2) l'utilisateur de l'appareil doit accepter tout brouillage radioélectrique subi, même si le brouillage est susceptible d'en compromettre le fonctionnement.

SYSTEM OVERVIEW

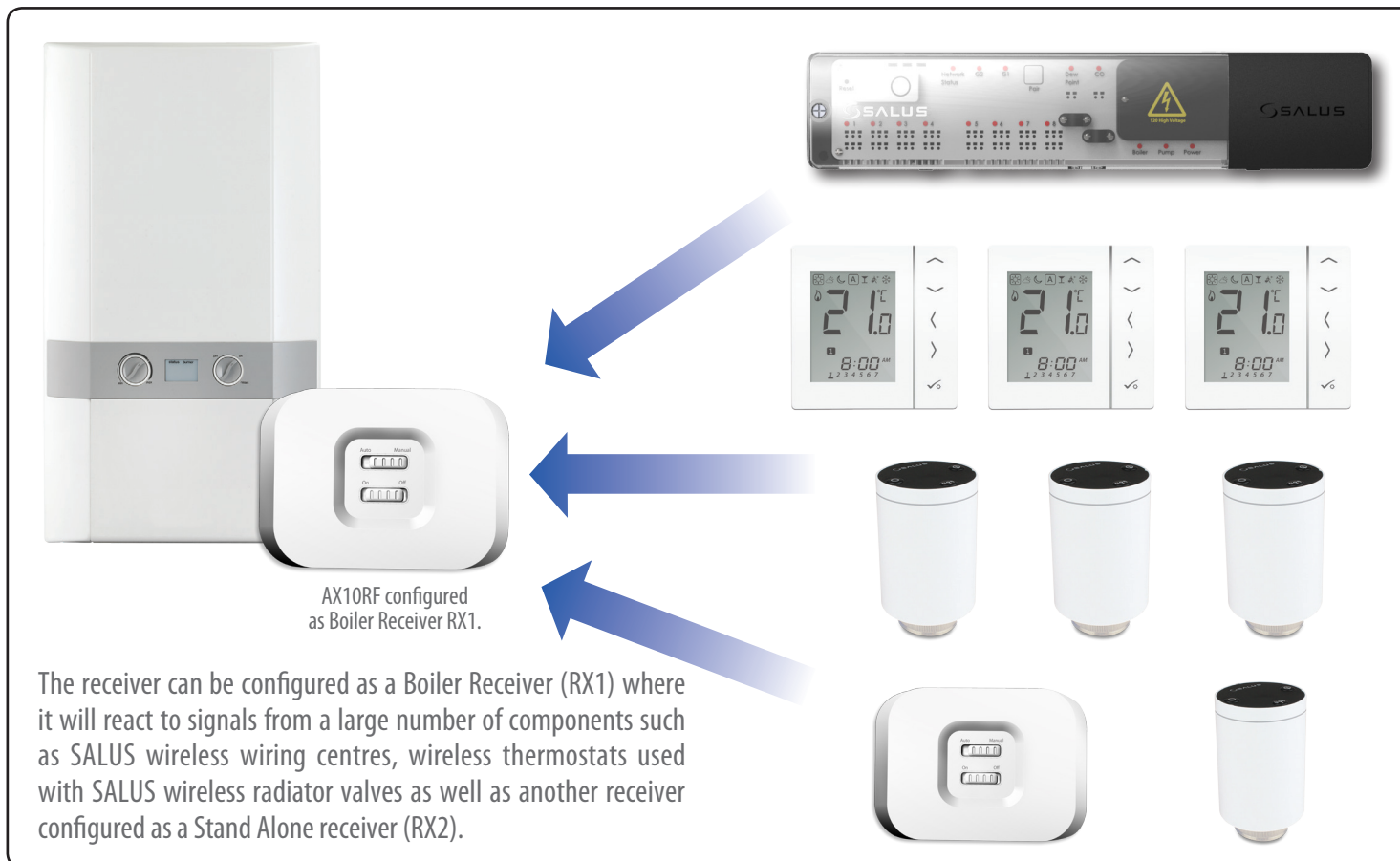
Wyse.ly System



User Interface

- 1** AUTO – System receiver output will switch on and off in relation to the command from the Wyse.ly transmitter. The bottom slide switch in active
- 2** RED led only in AUTO means that there is no output from the receiver.
- 3** RED and Green LED only in AUTO means that there is an output from the receiver. The device that the receiver is connected to will be switched on.
- 4** Manual- system receiver output is controlled by the bottom slide switch. Either permanently ON or OFF. The LED status in manual is the same as AUTO.

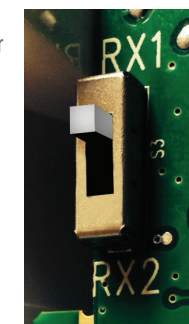
RX1 & RX2 RECEIVER CONFIGURATION



SYSTEM OVERVIEW - WYSE.LY SYSTEM CONFIGURED AS RX1

The unit can be switched internally switched to be used on two channels, RX1 (boiler receiver) or RX2 (single room receiver). Ensure the unit is not powered during setting of the RX1/RX2 slide switch.

The unit is supplied with the switch in the RX1 position (Boiler Receiver). In this mode, the unit can be wired to the boiler to switch it on or off using the wireless signals it receives other SALUS products on the SALUS Zigbee network



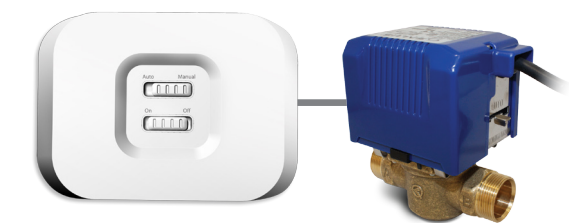
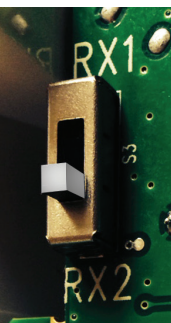
System Receiver configured to boiler receiver RX1. Refer to reverse side for wiring.

SYSTEM OVERVIEW - WYSE.LY SYSTEM CONFIGURED AS RX2

With the unit switched to RX2, the unit will act as a single room receiver. Switching of the unit will be controlled by a paired SALUS AS20RF Thermostat. Depending on its intended use, the unit can be used to switch a motorised valve, thermal actuator or pump.

As well as being used in this way, the RX2 can be used in conjunction with another unit set up as an RX1 (Boiler receiver). When there is a call for heat from the thermostat paired to the RX2 both of the wireless receivers will operate turning on both the boiler and the motorised valve / pump.

NB: Only 1 RX1 and 1 RX2 can be used as part of a network.



System receiver configured as stand alone receiver RX2. Refer to reverse side for wiring.