

# Braeburn®

## 229150 Automatic Digital Humidistat

### Before Installing or Operating, PLEASE READ ALL INSTRUCTIONS

In Automatic Mode, the Braeburn 229150 Digital Humidistat will adjust humidity based on the outdoor temperature, lowering the humidity in cold weather to reduce condensation. The humidistat can operate in Manual Mode to control humidity to a specific relative Humidity. In most dwellings, Automatic operation is preferred to reduce condensation on windows and within the structure. Manual mode is necessary where the outdoor temperature sensor cannot be installed. Manual mode may be desirable where valuable artwork, instruments or woodwork demand constant humidity. The LCD Display is backlit and easy to read. The humidistat can be mounted on an interior wall or on the return duct of the HVAC System.



## PRECAUTIONS

This Humidistat must be installed by a Qualified Technician. Always turn off power to the HVAC system prior to installing or servicing the humidifier or humidistat. Improper operation can result in over or under humidification. Over humidification can result in condensation, structural damage or mold. Condensation within a building's structure can cause a loss of structural strength. Condensation can also enable mold and mildew growth resulting in personal injury and damage to building structure and contents. Older and poorly insulated structures cannot withstand the same humidity levels as newer well insulated buildings. Read these instructions carefully. This humidistat requires a 24 volt, AC power supply. Improper voltage can cause malfunction or damage to the control. The technical specifications for this product and the contents of the user manual are subject to change without notice.

## Specifications

Electrical Rating 18-30 VAC, 60Hz  
Switching Load 1 amp max.  
Outdoor Sensor 200 ft. max.

Outdoor Temp. -10°F, (-23°C) min  
Accuracy RH 10%-90% +3% RH  
Accuracy Indoor Temp. +1°F, +1°C  
Accuracy Outdoor Temp. +1°F, +1°C  
Resolution 1° or 1%

### Auto Mode

Control Range 10%-60% RH

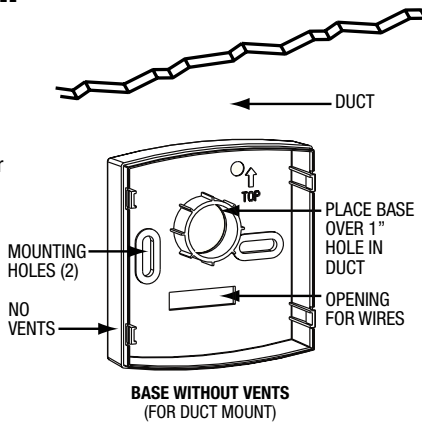
### Manual Mode

Control Range 10%-75% RH

## Duct Mount Installation

**IMPORTANT:** Use base without vents for duct mount installation.

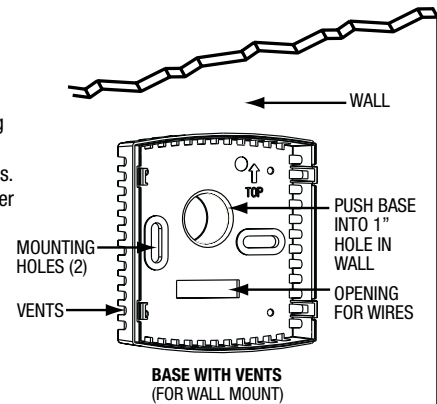
1. Choose an accessible location on the main RETURN air duct at least 15 inches from any duct bends.
2. Drill a 1 inch diameter hole in the center of your desired mounting location.
3. Using the base as a template, mark two mounting holes and rectangular opening (for wires).
4. Using a 1/8 inch drill bit, drill two mounting holes. Cut or drill out rectangular opening for wires.
5. Secure base to the duct with supplied sheet metal screws. Pull wires through opening.
6. Connect wires (see "wiring") and then attach humidistat body to base.



## Wall Mount Installation

**IMPORTANT:** Use base with vents for wall mount installation.

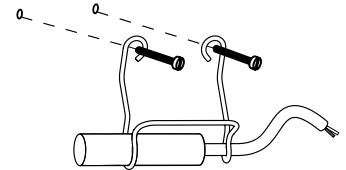
1. Choose a location in the living area that is clear of drafts or excessive amounts of humidity. Avoid mounting near air ducts, doors or windows. Do not install in bathrooms or kitchens.
2. Drill a 1 inch diameter hole in the center of your desired mounting location.
3. Using base as a template, mark the two mounting holes and rectangular opening (for wires).
4. Using a 3/8 inch drill bit, drill two mounting holes and gently tap in supplied anchors. Cut or drill out rectangular opening for wires.
5. Secure base to the wall with supplied plastic anchors and screws. Pull wires through opening.
6. Connect wires (see "wiring") and then attach humidistat body to base.



## Remote Sensor Installation

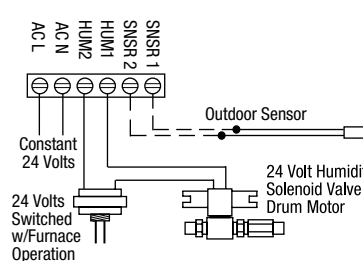
**IMPORTANT:** Keep remote sensor wires at least 6 inches from line voltage wires.

1. If installing the optional outdoor remote sensor, choose a location on the north or east wall of the structure. Install above the snow line away from air intakes or exhaust sources.
2. Run two wire (22 gauge minimum) cable from the humidistat SNSR1 and SNSR2 terminals to the outdoor location. Attach wire to sensor regardless of polarity. Wire run should not exceed 200 ft.
3. Install the metal hanging bracket with the screws provided. Insert sensor into large opening of bracket and sensor wire into small opening of bracket.
4. Use non-hardening caulk to plug any wiring holes after verifying operation of sensor.

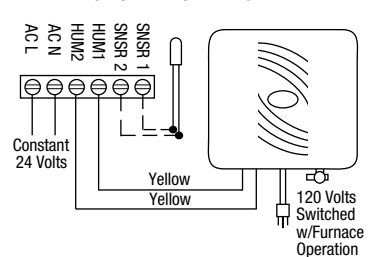


## Wiring

### WIRING TO 24 VAC HUMIDIFIER




### WIRING TO FAN POWER HUMIDIFIER



## Quick Reference

- DROP Button:** Scrolls through Manual, Automatic and Off modes
- THERMOMETER Button:** Scrolls through indoor humidity (default), indoor temperature and outdoor temperature (if outdoor sensor is connected).
- F / °C F / C Button:** Used to select Fahrenheit or Celsius display mode.
- ▼▲ DOWN and UP Buttons:** Use to adjust settings up or down.
- 🔑 + DROP Buttons:** Press the DROP and THERMOMETER buttons at the same time for 5 seconds. The humidistat will enter the TEST mode. (see "Testing the System")
- ▼ + ▲ Buttons:** Press the DOWN and UP buttons at the same time to enter OFFSET mode (see "OFFSET").
- 🏠 "House" Symbol:** Indoor temperature indicator.
- 🌳 "Tree" Symbol:** Outdoor temperature indicator.
- ▬ "Bar" Symbol:** Humidity index indicator (Automatic Mode Only).

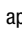
## Testing the System

1. Re-assemble system and check all connections.
2. Restore power to the HVAC system.
3. Check to see that humidistat display is on.
4. Start HVAC System by raising thermostat setting in heat mode.
5. Set humidistat to TEST MODE by pressing the **DROP** and **THERMOMETER** buttons at the same time for 5 seconds. The relay will close and the  will flash for 2 minutes. The humidifier should start operation.
6. Set to OFF mode to verify humidifier operation ceases.
7. The humidistat will stay in OFF mode unless set to Manual or Automatic mode. See "Operation".


## Operating Modes

Press any button to light the display. Press the **DROP** button to select Off, Manual or Auto Mode.

**OFF Mode:** The humidifier is turned off.

**MANUAL Mode:** The humidistat will maintain the single humidity set point selected. You can set your desired humidity level by pressing **UP** or **DOWN**. The humidifier will turn ON or OFF according to your setting. The humidifier will operate when the measured relative humidity falls more than 1% below the set point until the measured relative humidity is 1% above the set point. When the humidifier is operating, the  will appear in the display. Humidity may have to be lowered when weather is colder or if condensation is suspected. The settings table at right may be used for manual humidistat control.

Outdoor Temperature	Suggested Setting
-20°F -29°C	15%
-10°F -23°C	20%
0°F -18°C	25%
+10°F -12°C	30%
+20°F -7°C	35%
+30°F -1°C	40%

**AUTO Mode:** The humidistat will automatically raise the humidity as the outdoor temperature increases. This provides the highest possible humidity. The humidistat will automatically lower the humidity as the temperature drops. This minimizes the risk of condensation on cold surfaces like windows. In AUTO mode only, the Auto Humidity Index Set Point may be changed. You can set your desired humidity index from 0 (low) to 10 (high) by pressing **UP** or **DOWN**. The Humidity Index is based on the outdoor temperature and indoor humidity. The humidifier will switch ON/OFF according to the calculated auto humidity index set point. When the humidifier is operating, the  will display. Lower Index settings are for older homes with less insulation and poor vapor barriers. Higher Index settings are for newer homes with complete vapor barriers, triple pane windows and high R value insulation.

### Humidity Index Dwelling Type

1-2	Older than 1950, no vapor barrier, little insulation.
3-4	Built 1950-1965, no vapor barrier, R6 insulation.
5-6	Built in 1965-1975, craft vapor barrier, R11 insulation.
7-8	Built in 1980-1990, craft vapor barrier, R19, double pane windows.
9-10	Built after 1990, poly vapor barrier, R38 insulation, foam exterior cladding, triple pane windows.

If condensation is seen or suspected, reduce humidity index by 2 until condensation stops. The level bars in the upper right portion of the display indicate the humidity index; one bar for every two index points. For example, a humidity index of 6 will have three bars displayed in the upper right corner of the display.

## AUTO Mode Target Humidity

Humidity Index	Outdoor Temperature °F							
	-20	-10	0	10	20	30	40	50
1	0	5	10	15	20	25	30	35
2	0	8	13	18	23	28	33	38
3	0	11	16	21	26	31	36	41
4	0	14	19	24	29	34	39	44
5	0	17	22	27	32	37	42	47
6	0	20	25	30	35	40	45	50
7	0	23	28	33	38	43	48	53
8	0	26	31	36	41	46	51	56
9	0	29	34	39	44	49	54	59
10	0	32	37	42	47	52	57	62

% Relative Humidity

## OFFSET Mode

To change the calibration of the humidistat, an offset may be entered to the Humidity, Indoor Temperature or Outdoor Temperature displays. Press both **UP** and **DOWN** buttons together to enter OFFSET mode. The word OFFSET and RH will display. Press **UP** OR **DOWN** to change the humidistat's Humidity calibration. Press both **UP** and **DOWN** buttons together again to change the Indoor Temperature offset. Press both **UP** and **DOWN** buttons together again to change the Outdoor Temperature offset.

## Display a Temperature

Press the **THERMOMETER** button to move between displaying indoor and outdoor temperature. The "tree" symbol will be displayed when showing outdoor temperature (if outdoor sensor is connected). The "house" symbol will be displayed when showing indoor temperature. To change between °F and °C, press the **F / C** button.

## Trouble Shooting



"house" symbol flashing: The indoor temperature sensor has failed.



"tree" symbol flashing: The outdoor temperature sensor has failed.

### Humidifier Turns On and Off Repeatedly

- Check that input voltage is between 18 and 30 volts AC and not intermittent.
- Check that humidistat is NOT mounted on supply duct, downstream of the humidifier or within 12 inches of the humidifier.
- Make sure that Outdoor Sensor wiring is not close to line voltage wires.

### Humidifier Runs Continuously

- If humidifier operates while HVAC system is off, check that power to humidifier is switched with HVAC operation.
- If humidifier operates every time HVAC system runs, compare humidity to set point. If humidity is lower than set point, humidistat will call for operation.

### Humidifier Does Not Run

- Check wiring to / from humidistat control. Verify 18-30 volts. Use TEST MODE (see "Testing the System").

### Humidifier Runs When Air Conditioning is On

- If this is undesirable, change wiring to be powered only during heating periods, or set humidistat to Off mode.

### Humidity Not High Enough

- Fault with humidifier. Check humidifier, water supply, electrical connections.
- HVAC operating time is too short. Check humidifier trouble shooting.
- Humidifier is undersized. Review humidity load and humidifier capacity.
- Humidity index is set too low in Auto Mode (see "Auto Mode").

### Humidity Too High

- Wiring fault. Set humidistat to "OFF" mode and check that operation ceases.
- Outdoor sensor is being kept warm. Check that sensor is not buried in snow, on south side of house being warmed by sun or is too far inside of air intake.
- Humidity index set too high for structure.

## Five Year Limited Warranty

Braeburn Systems LLC warrants each new Braeburn digital humidistat against any defects that are due to faulty material or workmanship for a period of five years after the original date of purchase by a professional service technician. This warranty and our liability does not include damage to merchandise or the humidistat resulting from accident, alteration, neglect, misuse, improper installation or any other failure to follow Braeburn installation and operating instructions.

Braeburn Systems LLC agrees to repair or replace at its option any Braeburn digital humidistat under warranty provided it is returned postage prepaid to our warranty facility in a padded carton within the warranty period, with proof of the original date of purchase and a brief description of the malfunction. This limited warranty does not include the cost of removal or re-installation.

This warranty gives you specific legal rights and you may also have other rights that vary from state to state or province to province. Answers to any questions regarding our limited warranty may be obtained by writing our corporate offices.

**WARRANTY FACILITY:** Braeburn Systems LLC  
Attn: Warranty Department  
2215 Cornell Avenue  
Montgomery, IL 60538



# Braeburn®

Braeburn Systems LLC  
2215 Cornell Avenue • Montgomery, IL 60538  
Technical Assistance: [www.braeburnonline.com](http://www.braeburnonline.com)  
Call us toll-free: 866-268-5599 (U.S. Only)  
630-844-1968 (Outside the U.S.)